



E & A CONSULTING GROUP, INC.

Engineering Answers

10909 Mill Valley Road, Suite 100 • Omaha, NE 68154-3950
P 402.895.4700 • F 402.895.3599
www.eacg.com

Dear Homeowner:

The SID has contracted concrete work to be done on the streets in your SID. A contractor will be on site to do work which includes removing the existing concrete that is damaged and replacing it with new pavement.

Throughout the course of this project, there could be some minimal damage done to yards and or sprinkler systems. The contractor that is on site will be responsible for replacing any damaged sprinkler lines and/or heads. They will also be replacing any sod that is torn up while on site. Once the new sod is laid, it will be the responsibility of the homeowner at each lot to water the new sod until it has re-established itself.

Before starting the work on site, each contractor must put in a call and have all the utilities in the area located. You might notice some areas in your yard that have been flagged and/or spray painted. This does not indicate the area in which they will be working. It is just to give them an idea of what kind of utilities are in the area that could possibly be hit while the contractor is on site working.

All work that is completed in public Right-of-Way and follow City of Omaha and Sarpy County specifications.

The work in your SID should not take longer than 30 days to complete. Please let me know if you have any questions or concerns on this at all.

Thank You,

A handwritten signature in black ink, appearing to read 'Nelson C Flores', written over a horizontal line.

Nelson C Flores

Construction Administration Tech.

Engineering Answers...by assisting our clients

E & A Consulting Group, Inc.
10909 Mill Valley Road, Suite 100 • Omaha, NE 68154
402.895.4700 (o)
eacg.com

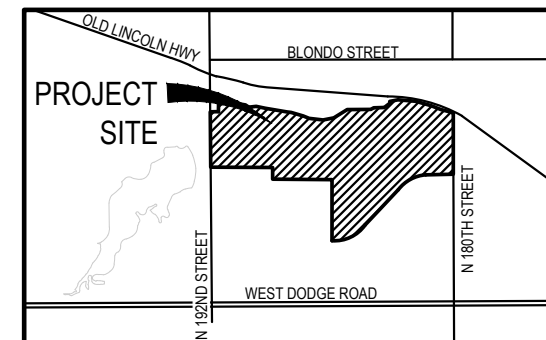


APPROXIMATE BID QUANTITIES

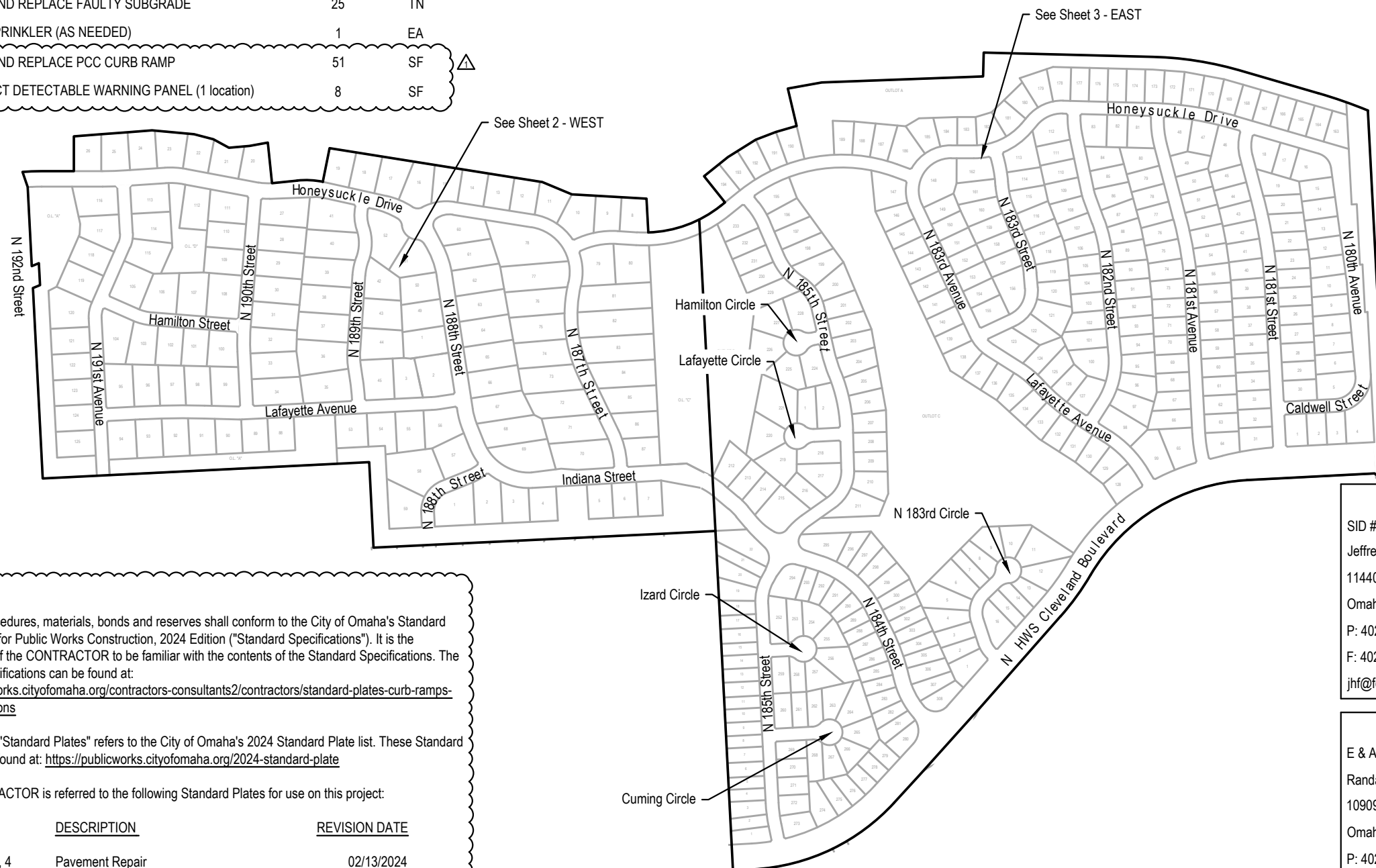
ITEM	DESCRIPTION	QUANTITY	UNIT
1	CONCRETE PAVEMENT REPAIR, LARGE AREA	1,375	SY
2	CONCRETE PAVEMENT REPAIR, SMALL AREA	592	SY
3	FULL DEPTH SAW CUT EXISTING PAVEMENT	2,192	LF
4	REMOVE AND REPLACE PCC SIDEWALK	2,175	SF
5	REMOVE AND REPLACE FAULTY SUBGRADE	25	TN
6	ADJUST SPRINKLER (AS NEEDED)	1	EA
A	REMOVE AND REPLACE PCC CURB RAMP	51	SF
B	CONSTRUCT DETECTABLE WARNING PANEL (1 location)	8	SF

SILVERLEAF ESTATES / WEST DODGE STATION

2024 STREET RECONSTRUCTION
SID NO. 503
DOUGLAS COUNTY, NEBRASKA



VICINITY MAP



INDEX OF SHEETS

SHEET NO.	DESCRIPTION
1	COVER
2	WEST
3	EAST
4	TOTAL QUANTITIES
5	COMPOSITE



NOTE TO BIDDERS

- All project procedures, materials, bonds and reserves shall conform to the City of Omaha's Standard Specifications for Public Works Construction, 2024 Edition ("Standard Specifications"). It is the responsibility of the CONTRACTOR to be familiar with the contents of the Standard Specifications. The Standard Specifications can be found at: <https://publicworks.cityofomaha.org/contractors-consultants2/contractors/standard-plates-curb-ramps-and-specifications>
- References to "Standard Plates" refers to the City of Omaha's 2024 Standard Plate list. These Standard Plates can be found at: <https://publicworks.cityofomaha.org/2024-standard-plate>

The CONTRACTOR is referred to the following Standard Plates for use on this project:

PLATE NO.	DESCRIPTION	REVISION DATE
1002-02-1, 3, 4	Pavement Repair	02/13/2024
504-01-1	Concrete Curb Ramp	02/13/2024

APPLICANT
SID # 503
Jeffrey Penne, Chairman
11440 West Center Road, Ste. C
Omaha, NE 68144
P: 402.334.0700
F: 402.334.0815
jhf@fdjlaw.com

DESIGNER
E & A Consulting Group, Inc
Teresa Wooten, P.E.
10909 Mill Valley Road, Suite 100
Omaha, NE 68154
P: 402.895.4700
F: 402.895.3599
twooten@eacg.com

INSPECTOR
E & A Consulting Group, Inc
Randall L. Pierce, P.E.
10909 Mill Valley Road, Suite 100
Omaha, NE 68154
P: 402.895.4700
F: 402.895.3599
rpierce@eacg.com

CONTRACTOR
Swain Construction, Inc.
Scott Warren
6002 N 89th Circle
Omaha, NE 68134
P: 402.571.1110
F: 402.571.3667
michelle@swainomaha.com

E & A CONSULTING GROUP, INC.
Engineering • Planning • Environmental & Field Services
10909 Mill Valley Road, Suite 100 • Omaha, NE 68154
Phone: 402.895.4700 • Fax: 402.895.3599
www.eacg.com
State of NE Certificate of Authorization #CA0008

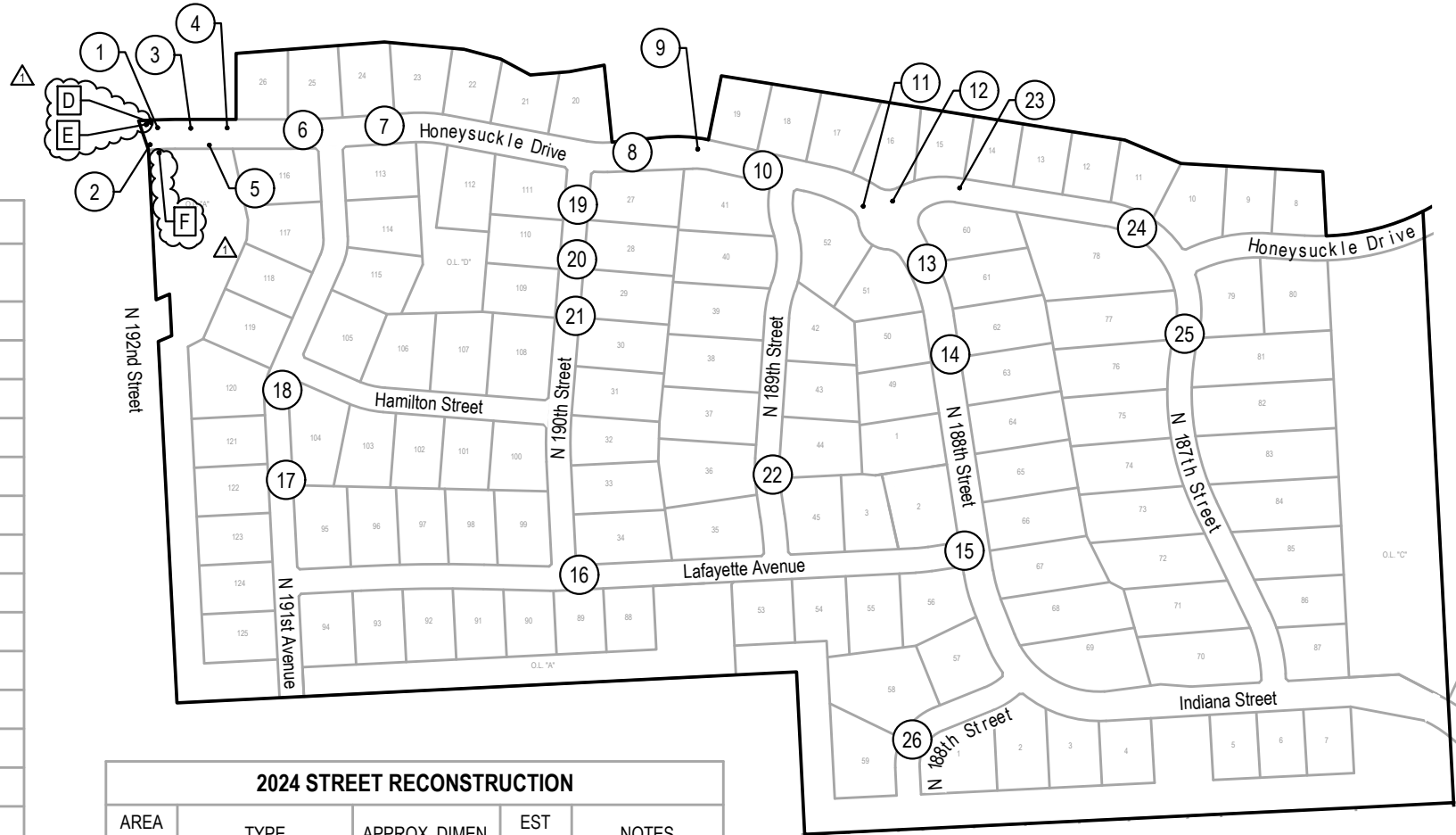
SILVERLEAF ESTATES / WEST DODGE STATION
2024 STREET RECONSTRUCTION
SID NO. 503
DOUGLAS COUNTY, NEBRASKA

COVER

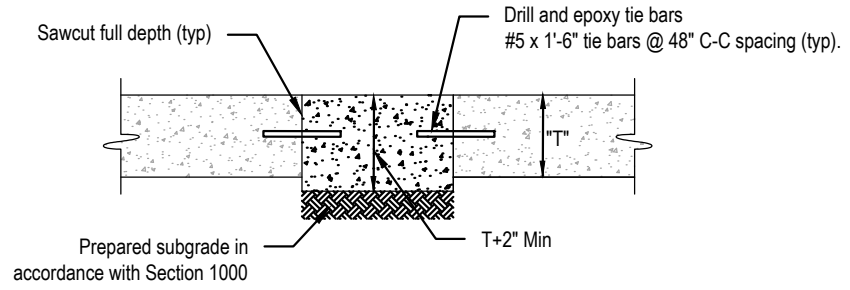
Revisions	Date	Description
1	4/19/2024	REVISION 1

Proj No: P2003.144.029
Date: 2/26/2024
Designed By: TMM
Drawn By: JME
Scale: 1" = 500'
Sheet: 1 of 5

2024 STREET RECONSTRUCTION									
AREA NO.	NO. POURS	SAW CUT L.F.	CURB L.F.	WIDTH	X	LENGTH	LARGE AREA EST S.Y.	SMALL AREA EST S.Y.	NOTES
1	1	145	120	12.5	x	120.0	166.7		
2	1	40	15	12.5	x	15.0		20.8	
3	1	40	15	12.5	x	15.0		20.8	
4	1	55	30	12.5	x	30.0		41.7	
5	1	45	20	20.0	x	20.0		44.4	
6	1	40	15	12.5	x	15.0		20.8	
7	1	26	20	3.0	x	20.0		6.7	Curb Inlet Throat
8	1	40	15	12.5	x	15.0		20.8	
9	1	40	15	12.5	x	15.0		20.8	
10	1	40	15	12.5	x	15.0		20.8	
11	1	40	15	12.5	x	15.0		20.8	
12	1	40	15	12.5	x	15.0		20.8	
13	1	85	60	12.5	x	60.0	83.3		
14	1	55	30	12.5	x	30.0		41.7	
15	1	55	30	12.5	x	30.0		41.7	
16	1	20	15	10.0	x	10.0		11.1	
17	2	85	90	12.5	x	60.0	83.3		
				12.5	x	30.0	41.7		
18	1	115	30	12.5	x	90.0	125.0		
19	2	50	30	15.0	x	25.0		41.7	
20	1	40	9	12.5	x	9.0		12.5	
21	1	16	10	3.0	x	16.0		5.3	Curb Inlet Throat
22	2	80	30	12.5	x	15.0		20.8	
				12.5	x	15.0	20.8		
23	1	55	30	12.5	x	30.0		41.7	
24	1	70	45	12.5	x	70.0	97.2		
25	1	70	45	12.5	x	45.0	62.5		
26	2	95	45	15.0	x	25.0	41.7		
				12.7	x	17.0	24.0		



2024 STREET RECONSTRUCTION					
AREA NO.	TYPE	APPROX. DIMEN.	EST S.F.	NOTES	
D	Sidewalk	5.5 x 189	1039.5		
E	Curb Ramp	5 x 10.3	51.3	ADA Plate - Cast Iron	
F	Sidewalk	5.5 x 189	1039.5		



E & A CONSULTING GROUP, INC.
 Engineering • Planning • Environmental & Field Services

SILVERLEAF ESTATES / WEST DODGE STATION
 2024 STREET RECONSTRUCTION

WEST

10889 Mill Valley Road, Suite 100 • Omaha, NE 68154
 Phone: 402.865.4700 • Fax: 402.865.3599
 www.eandagroup.com
 State of NE Certificate of Authorization #CA0008

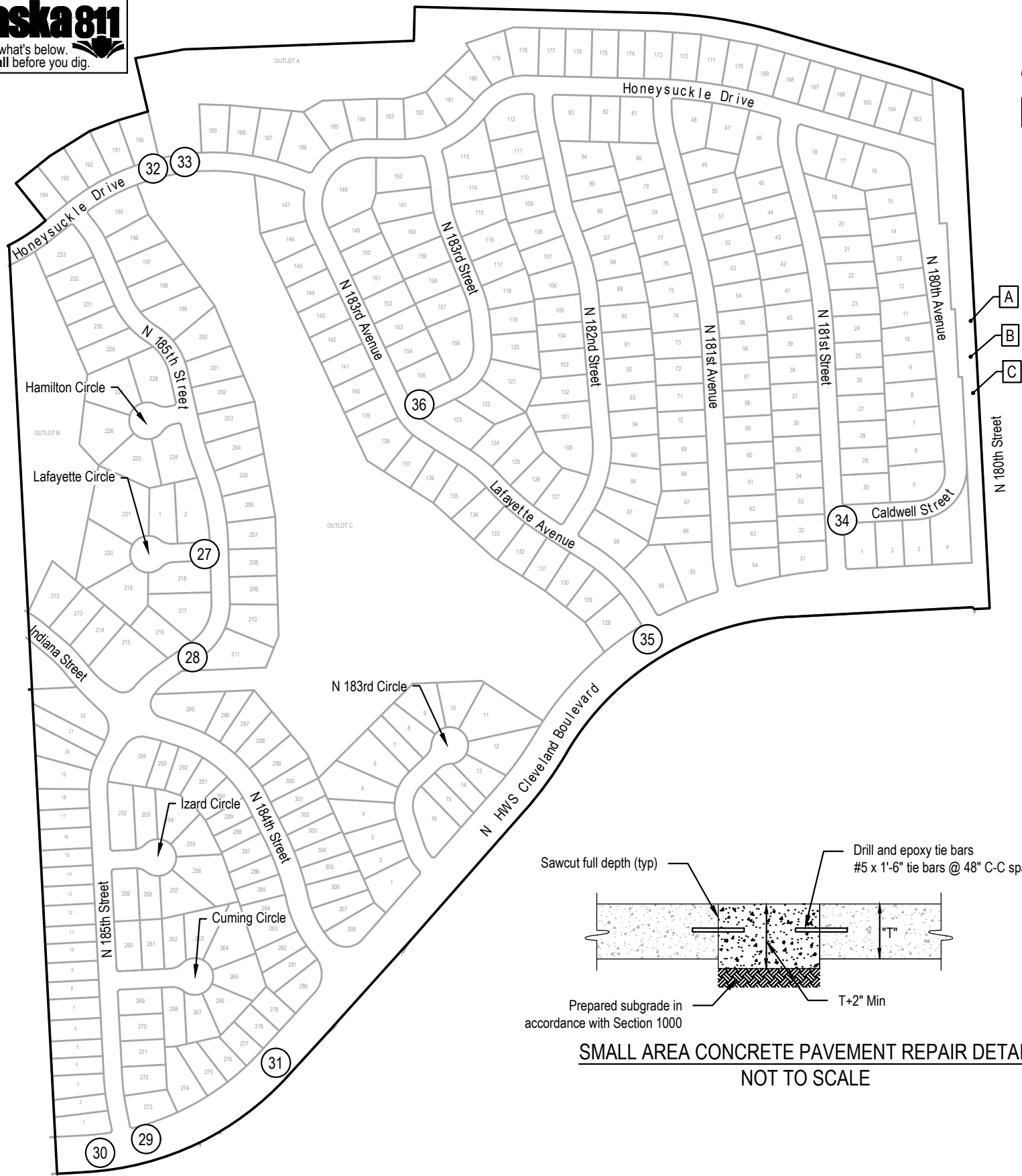
Engineering Answers
 E & A CONSULTING GROUP, INC.

SID 503
 DOUGLAS COUNTY, NEBRASKA

4/15/2024 11:43 AM K:\Projects\2003\144\p29\Engineering\CAD Files\ paving\Silverleaf Estates - West Dodge Station 2024 Street Reconstruction-000.dwg

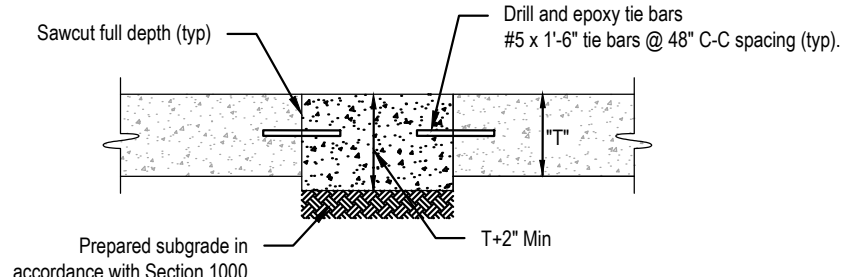
Proj No: P2003.144.029
 Date: 2/26/2024
 Designed By: TAM
 Drawn By: JMB
 Scale: 1" = 30'
 Sheet: 2 of 5

Jessica Brown



2024 STREET RECONSTRUCTION									
AREA NO.	NO. POURS	SAW CUT L.F.	CURB L.F.	WIDTH	X	LENGTH	LARGE AREA EST S.Y.	SMALL AREA EST S.Y.	NOTES
27	1	85	60	12.5	x	60.0	83.3		
28	1	40	15	12.5	x	15.0		20.8	
29	1	40	15	12.5	x	15.0		20.8	
30	2	205	180	12.8	x	130.0	184.2		
				12.5	x	80.0	111.1		
31	1	40	15	12.8	x	15.0		21.3	
32	1	70	45	12.5	x	45.0	62.5		
33	1	115	90	12.5	x	90.0	125.0		
34	1	20	10	10.0	x	10.0		11.1	
35	1	45	15	12.8	x	15.0		21.3	
36	2	50	60	25.0	x	30.0	83.3		

2024 STREET RECONSTRUCTION					
AREA NO.	TYPE	APPROX. DIMEN.		EST S.F.	NOTES
A	Sidewalk	4	x 8	32.0	
B	Sidewalk	4	x 8	32.0	
C	Sidewalk	4	x 8	32.0	



SMALL AREA CONCRETE PAVEMENT REPAIR DETAIL
NOT TO SCALE



E & A CONSULTING GROUP, INC.
 Engineering • Planning • Environmental & Field Services
 10809 Mill Valley Road, Suite 100 • Omaha, NE 68154
 Phone: 402.265.4700 • Fax: 402.965.3599
 www.eagroup.com
 State of NE Certificate of Authorization #CA0008

E & A CONSULTING GROUP, INC.
 Engineering Answers

SILVERLEAF ESTATES /
 WEST DODGE STATION
 2024 STREET RECONSTRUCTION
 SID 503
 DOUGLAS COUNTY, NEBRASKA

EAST

Revisions	Date	Description
1	2/26/2024	TMM
2	JUNE	JMB

Prog No: F2003.144.029
 Date: 2/26/2024
 Designed By: TMM
 Drawn By: JMB
 Scale: 1" = 30'
 Sheet: 3 of 8

4/15/2024 11:43 AM K:\Projects\2003\144\p29\Engineering\CAD Files\Paving\Silverleaf Estates - West Dodge Station 2024 Street Reconstruction-000.dwg
 Jessica Brown



2024 STREET RECONSTRUCTION									
AREA NO.	NO. POURS	SAW CUT L.F.	CURB L.F.	WIDTH	X	LENGTH	LARGE AREA EST S.Y.	SMALL AREA EST S.Y.	NOTES
1	1	145	120	12.5	x	120.0	166.7		
2	1	40	15	12.5	x	15.0		20.8	
3	1	40	15	12.5	x	15.0		20.8	
4	1	55	30	12.5	x	30.0		41.7	
5	1	45	20	20.0	x	20.0		44.4	
6	1	40	15	12.5	x	15.0		20.8	
7	1	26	20	3.0	x	20.0		6.7	Curb Inlet Throat
8	1	40	15	12.5	x	15.0		20.8	
9	1	40	15	12.5	x	15.0		20.8	
10	1	40	15	12.5	x	15.0		20.8	
11	1	40	15	12.5	x	15.0		20.8	
12	1	40	15	12.5	x	15.0		20.8	
13	1	85	60	12.5	x	60.0	83.3		
14	1	55	30	12.5	x	30.0		41.7	
15	1	55	30	12.5	x	30.0		41.7	
16	1	20	15	10.0	x	10.0		11.1	
17	2	85	90	12.5	x	60.0	83.3		
				12.5	x	30.0	41.7		
18	1	115	30	12.5	x	90.0	125.0		
19	2	50	30	15.0	x	25.0		41.7	
20	1	40	9	12.5	x	9.0		12.5	
21	1	16	10	3.0	x	16.0		5.3	Curb Inlet Throat
22	2	80	30	12.5	x	15.0		20.8	
				12.5	x	15.0		20.8	
23	1	55	30	12.5	x	30.0		41.7	
24	1	70	45	12.5	x	70.0	97.2		
25	1	70	45	12.5	x	45.0	62.5		
26	2	95	45	15.0	x	25.0	41.7		
				12.7	x	17.0	24.0		
27	1	85	60	12.5	x	60.0	83.3		
28	1	40	15	12.5	x	15.0		20.8	
29	1	40	15	12.5	x	15.0		20.8	
30	2	205	180	12.8	x	130.0	184.2		
				12.5	x	80.0	111.1		

2024 STREET RECONSTRUCTION									
AREA NO.	NO. POURS	SAW CUT L.F.	CURB L.F.	WIDTH	X	LENGTH	LARGE AREA EST S.Y.	SMALL AREA EST S.Y.	NOTES
31	1	40	15	12.8	x	15.0		21.3	
32	1	70	45	12.5	x	45.0	62.5		
33	1	115	90	12.5	x	90.0	125.0		
34	1	20	10	10.0	x	10.0		11.1	
35	1	45	15	12.8	x	15.0		21.3	
36	2	50	60	25.0	x	30.0	83.3		

2024 STREET RECONSTRUCTION					
AREA NO.	TYPE	APPROX. DIMEN.		EST S.F.	NOTES
A	Sidewalk	4	x 8	32.0	
B	Sidewalk	4	x 8	32.0	
C	Sidewalk	4	x 8	32.0	
D	Sidewalk	5.5	x 189	1039.5	
E	Curb Ramp	5	x 10.3	51.3	ADA Plate - Cast Iron
F	Sidewalk	5.5	x 189	1039.5	



E & A CONSULTING GROUP, INC. Engineering • Planning • Environmental & Field Services <small>10889 Mill Valley Road, Suite 100 • Omaha, NE 68154 Phone: 402.685.4700 • Fax: 402.685.3599 www.eag.com State of NE Certificate of Authorization #CA0008</small>	 E & A CONSULTING GROUP, INC. Engineering Answers	SILVERLEAF ESTATES / WEST DODGE STATION 2024 STREET RECONSTRUCTION <small>SID 503 DOUGLAS COUNTY, NEBRASKA</small>						
TOTAL QUANTITIES								
Proj No: P2003.144.029 Date: 2/26/2024 Designed By: TMM Drawn By: JMB Scale: N/A Sheet: 4 of 8	Revisions <table border="1" style="width: 100%; border-collapse: collapse;"> <tr> <th style="width: 10%;">No.</th> <th style="width: 10%;">Date</th> <th style="width: 80%;">Description</th> </tr> <tr> <td>1</td> <td>4/19/2024</td> <td>REVISION 1</td> </tr> </table>	No.	Date	Description	1	4/19/2024	REVISION 1	4/15/2024 11:43 AM K:\Projects\2003\144\p29\Engineering\CAD Files\Paving\Silverleaf Estates - West Dodge Station 2024 Street Reconstruction-000.dwg Jessica Brown
No.	Date	Description						
1	4/19/2024	REVISION 1						



E & A CONSULTING GROUP, INC. Engineering • Planning • Environmental & Field Services <small>10809 Mill Valley Road, Suite 100 • Omaha, NE 68154 Phone: 402.685.4700 • Fax: 402.685.3599 www.eag.com State of NE Certificate of Authorization #CA0008</small>							
SILVERLEAF ESTATES / WEST DODGE STATION 2024 STREET RECONSTRUCTION <small>SID 503 DOUGLAS COUNTY, NEBRASKA</small>							
COMPOSITE							
Revisions <table border="1"> <tr> <th>Date</th> <th>Description</th> </tr> <tr> <td>2/26/2024</td> <td>TAM</td> </tr> <tr> <td>4/19/2024</td> <td>REVISION 1</td> </tr> </table>	Date	Description	2/26/2024	TAM	4/19/2024	REVISION 1	4/15/2024 11:43 AM K:\Projects\2003\144\p29\Engineering\CAD Files\Paving\Silverleaf Estates - West Dodge Station 2024 Street Reconstruction-000.dwg
Date	Description						
2/26/2024	TAM						
4/19/2024	REVISION 1						
Proj No: P2003.144.029 Date: 2/26/2024 Designed By: TAM Drawn By: JMB Scale: 1" = 40' Sheet: 5 of 5	Jessica Brown						